

MILTON  KEYNES

BLACK HORSE *Lodge*

7 luxury canal-side
homes coming soon

LINFORD, MILTON KEYNES



RESOLUTION
HOMES

DEVELOPMENT

highlights



7 luxury
gated homes



Architecturally
designed
Boat-house style



Canal-facing
gardens at
Linford Lakes



Located between
Newport Pagnell and
Stanton Low Park



Opposite the
Black Horse Pub
and Restaurant



Located just a few
miles from two
train stations



● 3/4 bedroom
Semi detached
4 available (plots 1-4)

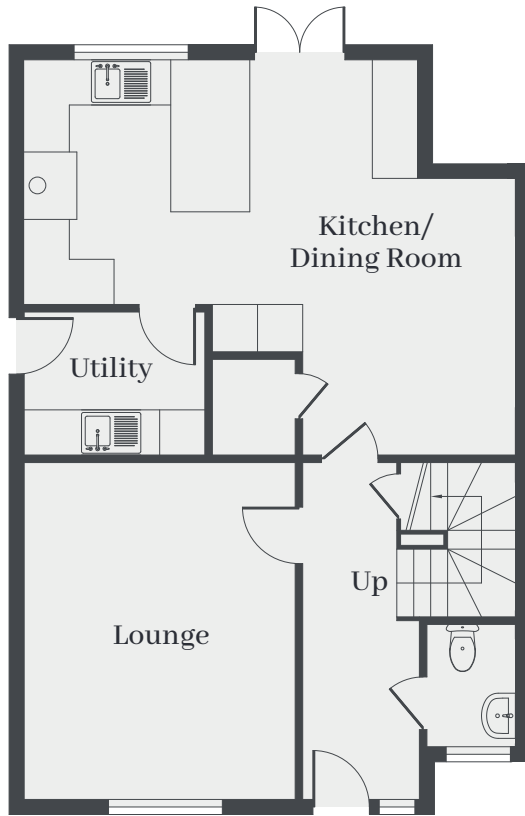
● 4 bedroom
Detached
3 available (plots 5-7)

--- Site boundary
N

3/4 BEDROOM SEMI-DETACHED

PLOTS 1 2 3 4

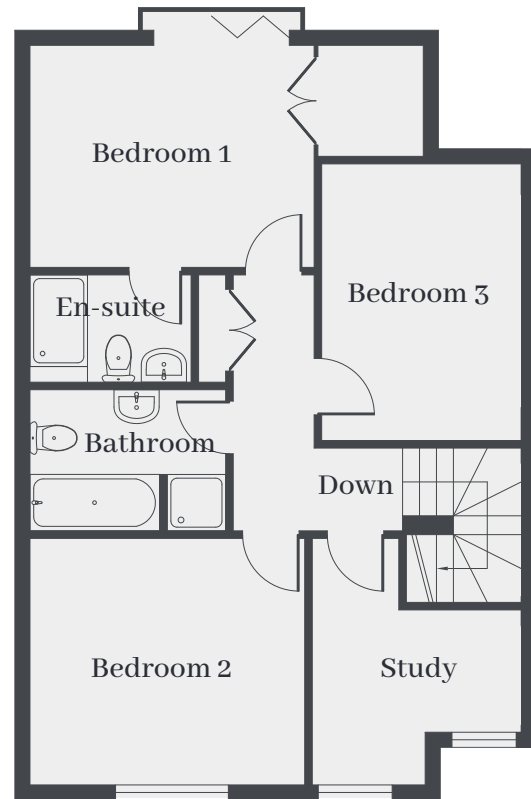
Approximate area:
1376 sq ft/ 127.8 sq m



Ground Floor

Room	Measurement (sq ft)	Measurement (sq m)
Lounge	14'11 x 12'	4.55 x 2.66
Kitchen/Dining Room	21'9 x 17'6	6.63 x 5.33
Utility	8' x 6'4	2.44 x 1.93

For identification only - not to scale
Plots 2 and 4 are in reverse



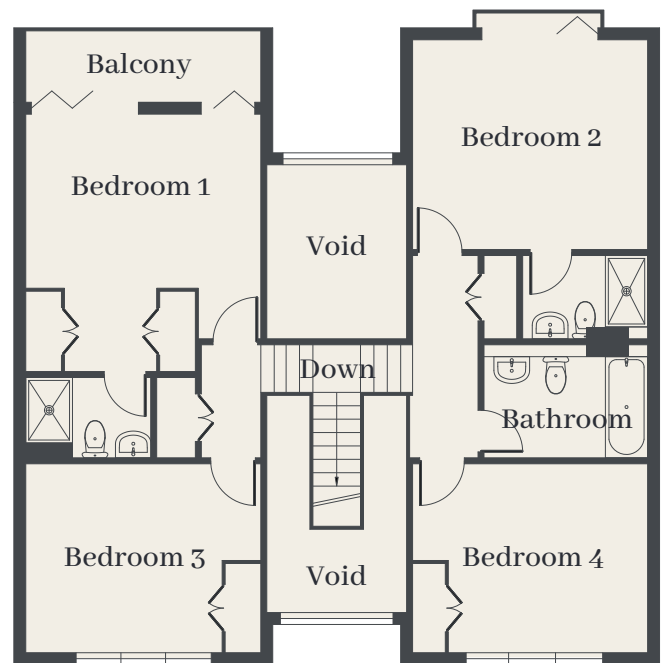
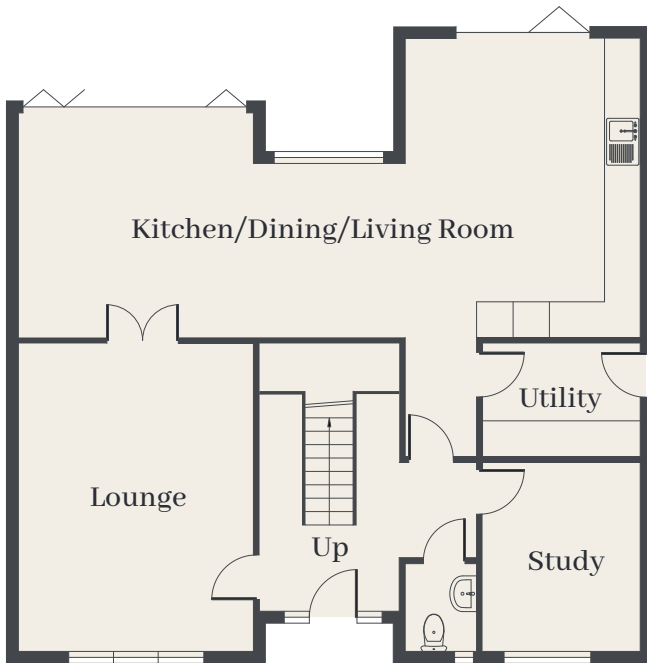
First Floor

Room	Measurement (sq ft)	Measurement (sq m)
Bedroom 1	12'7 x 9'10	3.84 x 3.00
Bedroom 2	12'2 x 10'11	3.71 x 3.33
Bedroom 3	12'3 x 8'10	3.73 x 2.69
Study	10'11 x 9'3	3.33 x 2.82

4 BEDROOM DETACHED

PLOTS 5 6 7

Approximate area:
1955 sq ft/ 182 sq m



Ground Floor

Room	Measurement (sq ft)	Measurement (sq m)
Lounge	17'3 x 13'2	5.26 x 4.01
Kitchen/Dining/Living Room	34'10 x 16'9	10.62 x 5.11
Utility	8'10 x 6'4	2.69 x 1.93
Study	10'7 x 8'10	3.23 x 2.69

First Floor

Room	Measurement (sq ft)	Measurement (sq m)
Bedroom 1	14'5 x 13'2	4.39 x 4.01
Balcony	13'2 x 4'	4.01 x 1.22
Bedroom 2	13'2 x 11'9	4.01 x 3.58
Bedroom 3	13'2 x 10'7	4.01 x 3.23
Bedroom 4	13'2 x 10'7	4.01 x 3.23

For identification only - not to scale
Approximate area excludes voids



BLACK HORSE
Lodge



info@resolutionhomes.co.uk